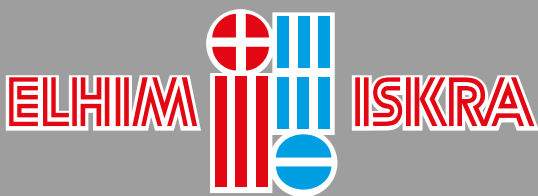
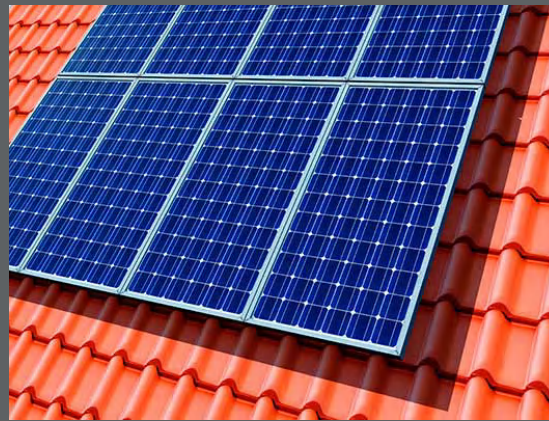


ELF - SEMI-TRACTION FLAT PLATE BLOCKS

ELT - TRACTION TUBULAR PLATE BLOCKS

for Cycling Applications



Manufacturer of EU, certified with ISO 9001, ISO 45001



HIGH CLASS LEAD-ACID BATTERIES
DESIGNED FOR WIDE RANGE
OF CYCLING APPLICATIONS



ELF - SEMI-TRACTION FLAT PLATE BLOCKS

Advantages:

- High rate discharge capability
- Excellent vibration resistance
- High performance in difficult working condition
- Economical and reliable
- Microporous separators with glass fiber mats to prevent the loss of active materials

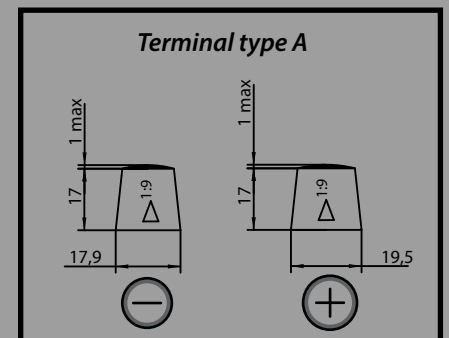
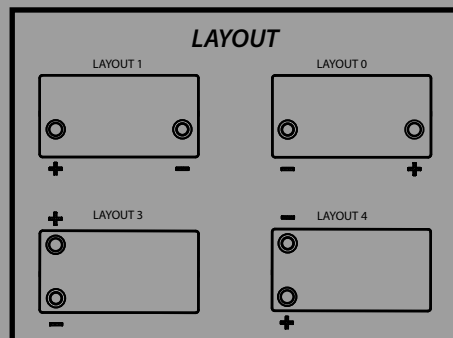


Model ID	Nominal Voltage	Capacity (Ah)			Dimensions			Weight /kg/	Layout	Terminal Type	PCS per Pallet
	V	C ₁₀₀	C ₂₀	C ₅	L /mm/	W /mm/	H /mm/				
ELF12-38	12	60	50	38	208	175	190	13.20	0;1	A	78
ELF12-50	12	70	60	50	242	175	190	15.50	0;1	A	63
ELF12-60	12	80	75	60	278	175	190	18.60	0;1	A	54
ELF12-80	12	110	100	80	353	175	190	23.60	0;1	A	42
ELF12-60J	12	90	80	60	260	170	220	19.00	0;1	A	54
ELF12-70J	12	100	90	70	303	175	231	22.00	0;1	A	42
ELF12-90	12	120	110	90	343	172	235	26.40	0;1	A	42
ELF12-120	12	155	140	120	513	189	220	34.60	3;4	A	24
ELF12-155	12	190	180	155	513	223	220	43.10	3;4	A	21
ELF12-190	12	250	230	190	517	275	241	56.40	3;4	A	18

Cycle life – 300 cycles in accordance with IEC 60254-1/DIN 40767
According to EN 61427 for solar application

Applications:

- wheelchairs
- truck applications
- caravans and motorhomes
- boats
- cleaning machines
- solar systems
- signaling and lighting
- remote monitoring and controlling



Charging profiles is Wa; WoWa, IU1a; WU1a

ELT -TRACTION TUBULAR PLATE BLOCKS

Advantages:

- Very long cycle life
- Excellent cycling properties
- High capacity performance
- Increased endurance even in cases of poor charging conditions
- Excellent tubular plate construction with free electrolyte ensures long operating life
- Perfect for applications in difficult working conditions

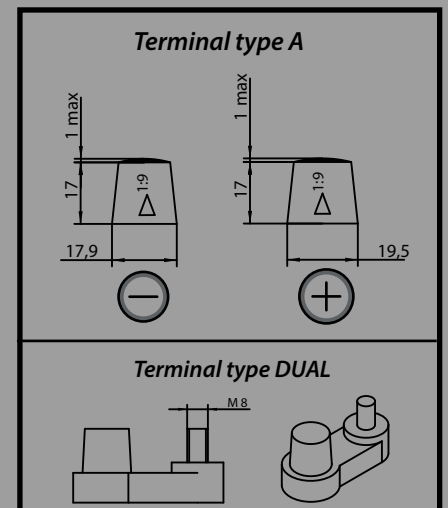
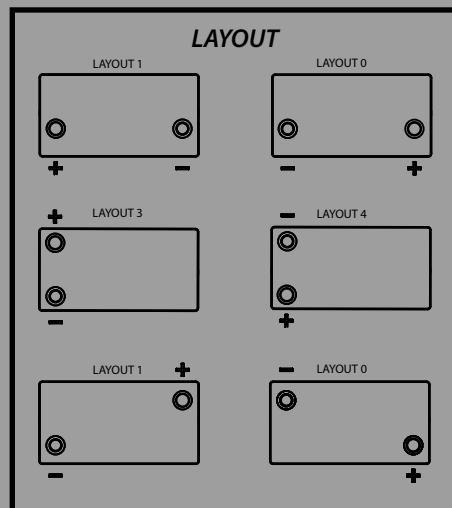


Model ID	Nominal Voltage	Capacity (Ah)			Dimensions			Weight /kg/	Layout	Terminal Type	PCS per Pallet
	V	C ₁₀₀	C ₂₀	C ₅	L /mm/	W /mm/	H /mm/				
ELT6-185	6	260	240	185	243	189	277	31.50	0	A	36
ELT6-175	6	240	220	175	260	180	280	31.10	0	DUAL; A	36
ELT6-280	6	380	350	280	310	180	360	47.10	0	A	24
ELT8-140	8	200	180	140	260	180	280	32.00	0	DUAL; A	36
ELT12-90	12	130	115	90	343	172	235	34.00	0;1	A	28
ELT12-120	12	155	140	120	343	172	290	41.00	0;1	A	28
ELT12-125	12	180	165	125	513	189	220	42.10	3	A	24
ELT12-150	12	220	200	150	513	220	220	55.20	3	A	21
ELT12-180	12	260	240	180	517	275	241	65.00	3	A	18

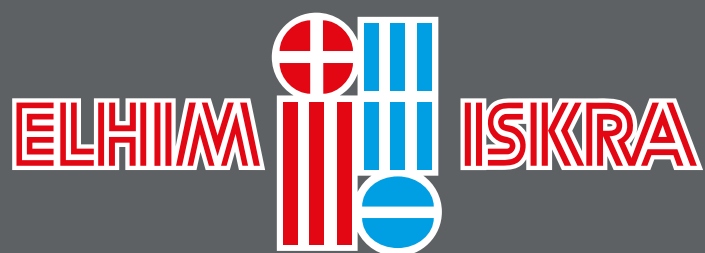
Cycle life – 1200 cycles in accordance with IEC 60254-1/DIN 40767
According to EN 61427 for solar application

Applications:

- wheelchairs
- scissor lifts
- aerial devices
- golf carts
- caravans and motorhomes
- boats
- cleaning machines
- solar systems
- signaling and lighting
- remote monitoring and controlling



Charging profiles is Wa; WoWa, IUla; WUla



Manufacturer of EU, certified with ISO 9001, ISO 45001

TRACTION BLOCKS

ELHIM-ISKRA JSC – 9, Iskra Str., Pazardzhik, Bulgaria

Tel. + 359 34 44 17 51, Tel. + 359 34 44 45 48

e-mail: office@elhim-iskra.com, www.elhim-iskra.com